



The Window

A monthly newsletter published for the parish and friends
of Christ Episcopal Church of Bowling Green, Kentucky



Butterfly Release 2018 photo by Eliza Pankey-age 10

JUNE 2018

**Christ Episcopal Church is a community of Christ's servants who seek to —
Worship God with joy and wonder,
Learn and Grow together, and
Radiate God's love to all.**

From The Rector

Dear Friends,

Did you ever think you'd see the Presiding Bishop on the Today Show, the View, and even TMZ?!?! I know I didn't. Or, at least if I did, I never thought it would be for something so amazing as simply proclaiming the Good News of Jesus Christ to some two billion people around the world. As I write this article on May 23rd, the events of the last five days are astonishing. Who would have guessed that Michael Curry's homily would be the most tweeted portion of the royal wedding? Who would have guessed that he'd be spoofed on Saturday Night Live? Who would have guessed that the Good News of God's love could have such an impact?

Well, that last question is a bit of a trick. I've know the power of God's love, and I know that you have too. It is why you come to church on Sunday. It is why you volunteer to feed the hungry, clothe the naked, visit the sick, and make disciples. It is why you carve out a portion of your hard-earned income to support the mission and ministry here at Christ Church. Each of us knows the power of God's love, which means each of us can share the Good News, just like the Presiding Bishop.

In the past few days, several articles have been posted warning Episcopalians about believing our own hype machine. The bubble will burst. The PB's fifteen minutes will come to an end. "Once we are done high-fiving," as one friend of mine wrote, "what are we going to do?"¹ It is moments like these when it is helpful to remember what we are about.

There is, in the next few weeks, the real possibility of unfamiliar faces entering our midst, drawn by our Presiding Bishop, searching for the love of God. Are we prepared to welcome them? Coffee and donuts can only go so far. It is the face-to-face welcome that a visitor receives from each of us that will determine if they come back to share in the grace-filled life of God or not. It depends on if they hear a friendly, "hello," or simply see people circled up in conversation. It depends on if they get help navigating the bulletin, the hymnal, and the communion line. It depends on if someone invites them to breakfast after eight or to have a cup of coffee after ten. It depends on all of us if the love of God that the Presiding Bishop so clearly and passionately articulated is shown to every person who enters our midst.

We are a community of Christ's servants who seek to radiate God's love to all. In this amazing moment, that means especially the stranger in our midst.

Grace and Peace,



¹ <https://medium.com/@revmichie/once-we-are-done-high-fiving-what-are-we-going-to-do-9e4ba43961d5>

From The Associate Rector

Dear Friends,

Part of my love for Episcopal and Anglican tradition stems from the fact that I like to know what to do; I like to have a tradition for things. I enjoy when I know what's coming and what to say. This is as true in my life as it is in my faith. This manifests itself in the path that always remains the same when I am wandering through the grocery store or in the pattern in which I wash my dishes after dinner. This need/love of having a pattern also manifests itself in conversation, and so when people come back from a vacation or a trip I have three questions that always remain the same:



1. What was the best thing you ate?
2. What was the most beautiful thing you saw?
3. Who was the favorite person you met?

The first two are pretty standard, but it's the last one that generally throws people for a loop. Almost always people will hedge that question with comments about not really meeting people, but I push back. Everywhere we go, we encounter people. Even if it's the cashier at that small store where you picked up that much needed, but forgotten item or if it's the person who you met with whom you shared a bit of your journey.

While that last question is often the hardest to answer, it almost always elicits the longest, most energetic response. I think it's because we love to encounter others, even if we aren't aware of it. In Barbara Brown Taylor's *An Altar in the World*, she encapsulates the gift that is meeting other people by saying, "What we have most in common is not religion but humanity. I learned this from my religion, which also teaches me that encountering another human being is as close to God as I may ever get – in the eye-to-eye things, the person-to-person thing – which is where God's Beloved has promised to show up."¹ Meeting other people is a sacred gift in which we encounter the very image of God.

As the June Window comes out, I will just be returning from my first vacation since I have been with you at Christ Church, and I look forward to telling you about all the ways in which I have encountered the other on my journey. Perhaps you are taking big or small trips as well, or maybe it will be part of your normal routine, but try to pay attention. Try to pay attention to all of the others you encounter and all the ways in which it is through them that you see God face-to-face.

Grace and Peace,

A handwritten signature in cursive script that reads "Barbara".

¹Taylor, Barbara Brown. *An Altar in the World: A Geography of Faith*. 102.

From The Senior Warden - Ann Puckett

By the time this is published, the month of June will be upon us and for my family this will be a very special time. Once every five years I am able to take a month long sabbatical and this year I will be on sabbatical during the month of June. This will be my fourth sabbatical and my entire family looks forward to these opportunities! We have always taken this time off and chosen to travel with our family to see parts of the world that some or all of us have never seen before. To be away from all the worries and distractions of work and school have made for wonderful memories and experiences that we talk about to this day. It helps me recharge my batteries but most of all spend intentional time with our parents, children and now grandchildren. Unfortunately, you won't see us much at church during June but know we will be experiencing God and his many wonders while away.



For each of you, I hope the summer months will be a time to relax and recharge your batteries as well. Much of our church programming follows the school year so hopefully you will be able to spend more intentional time with your family and friends.

I hope each of us can reflect on the many activities and ministries we have here at Christ Church and start off the fall with a renewed energy and interest to participate. Think about a new ministry where you might be able to offer your time and talents. I have found that each time I choose to immerse myself in a new church activity that the rewards far outweigh the time invested. So rest up, enjoy the summer and be ready to jump into our new programming year with excitement for what it could bring to your life and others!

HELP Ministry

Where does a single parent turn when one of her children, who has a broken leg, has been diagnosed with a rare bone disease and needs home care? The mother must stay home with the child so she cannot work. Then she receives an electric bill of over \$200. We had this case show up recently while interviewing people for help with utilities, emergency prescriptions, and gasoline for trips to doctors in Louisville and Nashville.

Fortunately, we were able to help this parent and refer her to other agencies for more long term help because of your generosity. But we are not able to help many people with similar problems because of a lack of sufficient funds.

If you are willing to support this outreach ministry, mark your check for HELP MINISTRY and it will go to a worthy cause. Thanks in advance for your generous support!

Pentecost Celebration



Butterfly Release 2018 photo by Georgie Tabor-age 9 (jpg.3689)

Suddenly a sound like the blowing of a violent wind came from heaven and filled the whole house where they were sitting. They saw what seemed to be tongues of fire that separated and came to rest on each of them. All of them were filled with the Holy Spirit...



Acts 2:2-4



Celebrating our Graduates



Dylan K. Harris is graduating from Greenwood High School on June 1, 2018. Dylan is the son of Scott and Courtney Harris. Dylan will be attending Western Kentucky University, on an academic scholarship, as part of the Mahurin Honors College in the Fall of 2018. He is pursuing a major in mechanical engineering and a minor in computer science.

Maria Christine Siewers, daughter of Fred and Helen, Siewers, graduated from Bowling Green High School on May 27. Maria is a lifelong member of Christ Episcopal Church. She has attended All Saints Episcopal Camp every summer since 2007. Maria has danced at Dance Images studio since 2003, plus two summers with Nashville Ballet. She graduated from BGHS with a 4.0 GPA and she will attend WKU Honors College. Maria plans to attend the Honors College at Western Kentucky University.



Brooks L. Goodwin is a graduate of Bowling Green High School where he played Varsity soccer and lettered for three years, was in the Beta Club, Young Democrats, and graduated with honors. He plans to attend Western Kentucky University's Mahurin Honors College in the fall of 2018. He has declared his major Biology and plans to attend medical school.

Elise Caroline Hughes is the daughter of Rick and Stacey Hughes. She is an honor student at Bowling Green High School and has been very active in drama and theater through the Public Theater of Kentucky and BG Onstage. Elise also lettered in volleyball playing during her freshman and sophomore year at BGHS. She is a member of DECA, BG Pep Club, Student United Way, the yearbook staff, and the BGHS Football Homecoming Court. Elise loves to travel and she participated in a Global Leadership Adventures' service project in Costa Rica for 10 days last summer. Her future plans are to attend Belmont University with a double major in Theater and Communication.



Celebrating our Graduates

Kristen Lyons, daughter of Greg and Paula Lyons, graduated in December 2017 from the Honors College at Western Kentucky University with Bachelor's degrees in Accounting and Economics.

Stevie Hoyng graduated from Western Kentucky University with a Bachelor's of Science degree in Psychological Science with a minor in Neuroscience.

Billy Adams graduated from Western Kentucky University with a Bachelor's degree of Economics.

Mikey Crabtree graduated from the Southcentral Kentucky Community & Technical College with a certificate of study in Licensed Practical Nursing

Robert Carbin, son of John and Suellen Carbin, has graduated from Indiana Wesleyan University with a Master's of Accounting.

Anastasia Arnold, daughter of Deb and Ken Stein, has graduated as a Certified Veterinary Technician from Columbia State Technical College.

Kristoffer Thulke, son of Susan Orange, has graduated from Adelphi University with a Bachelor's degree in Sociology.

Troy Burchett, grandson of Charles and Donna Bussey, has graduated from the University of Louisville with a Bachelor's degree of Music, focusing on Jazz Performance.

Duncan Lozinski, grandson of Cora Jane and the late Col. Robert Spiller, graduated from the University of Central Florida with a Master's degree in Environmental Engineering.

Spencer H. Goidel, grandson of Don and Lou Goidel, has graduated from the University of Louisiana at Lafayette with a degree in Liberal Arts.

Matthew Howard Surface, grandson of the Rev. Howard and Linda Surface, graduated from the University of New York at Albany with a degree in Psychology and Spanish.

Cailey Ann Rose Surface, granddaughter of the Rev. Howard and Linda Surface, graduated from Frank McCourt High School, New York City. She will attend Skidmore College in Saratoga Springs, New York.

Guen Petty, daughter of Andrea and Scott Petty, graduated preschool from La Petite Academy. She will attend Lost River Elementary in the fall.

Vacation Bible School



VACATION BIBLE SCHOOL 2018: CLEAN WATER FOR ALL GOD'S CHILDREN

Sunday, June 10-Wednesday, June 13

Christ Episcopal Church

5:30pm Dinner 6-8pm VBS

Ages 3-12 yrs old

Register online at www.cecbg.com

Online registration can be found at: <http://www.cecbg.com/#/formation/vbs-2018>

Volunteer sign up can be found at: <https://www.signupgenius.com/go/20f094aa9ab2ca7f49-clean>

VBS 2018: CLEAN WATER FOR ALL GOD'S CHILDREN

Help us make the week a success! We are collecting the following items:

- Modeling Clay (not play dough)
- Cotton Balls
- Blue Crayons (any shade of blue will work!)
- Wax Paper
- Googly Eyes
- Artificial Greenery
- Green Crepe Paper

WANT TO VOLUNTEER?
Contact Laura Goodwin
Laura@cecbg.com

Episcopal Youth Community

HELP THE EYC



THIS SUMMER, THE EYC WILL HELP MAKE SOJOURNER BAGS FOR HOTEL INC. YOU CAN HELP BY DONATING TUNA OR CHICKEN SALAD LUNCH KITS
WE ALSO NEED FRUIT CUPS OR APPLESAUCE, PUDDING CUPS, AND GRANOLA OR FRUIT & GRAIN BARS



ITEMS CAN BE PLACED IN TUBS IN SURFACE HALL AND NEAR THE OFFICE

HELP HOTEL INC



June 8th: Help Prepare for VBS - 11am-2pm - Join us as we help get crafts ready and set-up for VBS. Lunch provided.

June 10th-13th: Volunteer with VBS - 5:30pm-8pm - Youth are invited to help during VBS. Contact Laura Goodwin for more info or to sign-up! (Laura@cecbg.com)

June 16th: Sojourner Bags - 2pm-4pm - We will meet to assemble Sojourner Bags for HOTEL INC. Snacks Provided.

June 27th: Book Sale Set-Up - 1pm-3:30pm - We will meet to help set-up the book sale to benefit our Living Waters for the World mission. Snacks provided.

Please contact Karen Crabtree (karen@cecbg.com) for more information regarding EYC activities.



Summer Camp²⁰¹⁸

EXPLORING GOD'S CREATION

Summer Camp 2018

God's Creation - Environments Around the World

Environments--the surroundings or conditions in which all of God's creatures live or operate.

We are called to be stewards, to protect people and the planet, in the world God created.

Join us as we explore environments from around the world!

Senior High Camp • June 17-22 • For rising 9th-12th graders
\$500 • DEADLINE: JUNE 6

New Horizons Camp • June 24-29 • For rising 5th-6th graders
\$500 • DEADLINE: JUNE 13
Also CIT SESSION 1 • \$150

Primary Camp • July 8-12 • For rising 2nd-4th graders
\$400 • DEADLINE: JUNE 27
Also CIT SESSION 2 • \$150

Junior High Camp • July 15-20 • For rising 7th - 8th graders
\$500 • DEADLINE: JULY 3

Get more information [here](#) or email youth@episcopalky.org



Episcopal Campus Ministry (ECM)

EPISCOPAL CAMPUS MINISTRY

ADOPT A COLLEGE STUDENT

Mother Becca will begin collecting names of families among Christ Episcopal Church who will be interested in adopting a college student for the 2018-2019 WKU school year

Adopting a college student will be like taking our students in to be part of your family and provide them a connection point to Christ Church. It will require you to treat them to a meal once a month in your home or out and to keep up with them and their school year.

Send interest or questions to Mother Becca at becca@cecbg.com.



MEALS INC



Christ Church will be responsible for preparation & delivery of MEALS, Inc on Saturday, July 28th.

Contact Kathy Wise-Leonard at

billkathy@bellsouth.net or

(270)779-5595 for any information needed.

Save The Date

Mark your calendar for our Sunday School Kick-off: Sunday, August 12th at 9am, when classes for children, youth, and adults will resume.

Our Annual Pool Party will be that afternoon from 3pm-6pm at the Puckett home!

Education for Ministry

Each Sunday, near the conclusion of our service, we repeat a prayer that includes a challenge to our daily life as Christians - "and now, Father, send us out to do the work you have given us to do...". Sometimes, the nature of that work is not entirely clear to us. Or maybe we thought we knew our purpose, but are beginning to feel uncertain. EfM offers lay people a path to discover new ways to respond to God's call to Christian service.

Are you interested in exploring your personal ministry in greater depth? With the support of an open and caring group of co-explorers? Consider Education for Ministry (EfM) at CEC. Four one-year segments study Old Testament, New Testament, Church History, and contemporary theology. EfM is far more than a study of

scripture or theology. It is an opportunity to discover, or rediscover one's self and how you can put faith into action. During weekly class meetings, our small groups share and listen to each other and are challenged to consider all kinds of topics from multiple perspectives: theological, personal, and cultural. A significant commitment is made by each participant to study and attend our class meetings. The reward for that commitment is the creation of deep and lasting relationships supporting us on our individual journeys to carry out God's purpose.

Christ Episcopal Church supports two EfM groups which meet on Monday mornings or Monday evenings from late August until May. Join a group of new students in Year One or, if you have already completed a year or more of EfM, consider coming back to finish up. Tuition, which covers books and support from the School of Theology at the University of the South, Sewanee, is \$375, with possible tuition reduction on an individual basis. To learn more about the program, contact [Bill Leonard](#) or [Ed Tivol](#) for the morning class; [Laura Cohron](#) or [Leslie Weigel](#) for the evening class. Registration for the 2018-2019 term begins in June.



Centering Prayer

Be still and know that I am God. (Psalm 46:10)

Do you sometimes feel the noise of the world puts you on overload? Do you ever seek a few quiet moments just to sit in silence so you can "hear" what is really important? If so, then we may be the group for you.

Come join us in the Chapel on Tuesdays at 12:15pm.

No preparation is needed. Come as you are. All are welcome.

For more information, please contact Sue Edwards (sumace2@gmail.com).



Second Thursday Lunch Bunch



**The Lunch Bunch will resume
in September!**

For more information on future meetings,
please contact
Ann Esterle (270.782.3342)
or Becky McCraney (270.842.8279).

Lions Club Glasses Donations

The Evening Lions Club collects used eyeglasses for use in overseas missions to developing countries. If you would like to be a part of this mission, you may deposit your old glasses (and cases) in the Lions Collection Box at the foot of the steps in the Gathering Area. The glasses will be cleaned and their prescription strength measured before being sent with an eye specialist to areas of need. Hearing Aids are also accepted.

Knitting And Crochet Group



**Knitting and Crochet Group
has suspended meetings until
Tuesday, September 4th.
For more information,
contact Mary Travelsted**

English Country Dance

**Sunday, June 17
2:00pm
Surface Hall**

English Country Dance is back at Christ Church. Social dances from the 1700s (think Jane Austen), to the present, in the English Country Dance style. All dances are taught and prompted. No partner is necessary. All ages are welcome and beginners are always encouraged. We meet the 3rd Sunday of each month in Surface Hall from 2:00—3:30pm. There is no charge. Please wear non-marking, comfortable shoes. For more information, please contact Jan Campbell (270.535.2258).



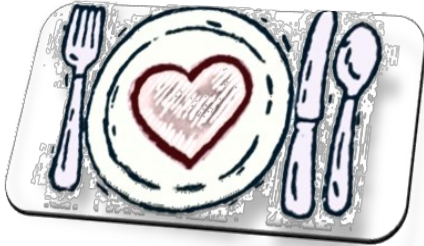
Healing Service

Wednesdays
12:00pm
Nave
(Excluding June 6th)



HEALING

Wednesday Lunch Ministry



The Wednesday Lunch Ministry

is suspended until

July 11th, 2018

Brotherhood Of St. Andrew



The Brotherhood of St Andrew invites all men and youth of Christ Church to join us in service to the church and to the community.

We meet on the first and third Saturdays of each month in the Conference Room at 8:00am for fellowship and sharing a reflection on Sunday's Gospel reading.

Our next meetings will be Saturdays, June 2 and 16.

Hope to see you there!

Daughters Of The King (DOK)

Sunday June 3rd
8:50 AM
Hines Chapel

The daughters will gather for devotion and a regular meeting.





**Thanks to
everyone for
coming to the
Crawfish & Shrimp
Boil!**

WE RAISED \$3200 TO BENEFIT OUR LIVING WATERS FOR THE WORLD MISSION TEAM! A

GOOD TIME WAS HAD BY ALL! A SPECIAL THANKS TO OUR SILENT AUCTION DONORS:

FORD'S FURNITURE, FERN RUNNER NURSERY, ELIZABETH RHODES STUDIO, DEEMER'S FLOWERS, ART MATTERS, MARILYN KEITH, SOUTHERN LANES, BG HOT RODS, MELLOW MUSHROOM, DONATO'S PIZZA, WILD BIRD NATURE STORE, BEET BOX PRODUCE, BOWLING GREEN BACKYARD BOOTCAMP, SUITE ZEN, HOT YOGA, BE HAPPY YOGA AND SALT CAVE, GREENWOOD FORD, LOST RIVER CAVE, PHO BC, CHANEY'S DAIRY BARN, LINDA REYNOLDS, CAROL DUBOSE, CHERYL PALMER, MARYANNE RINGO, GARDEN PATCH, BARBARA STEWART INTERIORS, THE BIKE RACK BISTRO, CHICKADEE'S COMFORT FOOD TO GO, PRESERVATION TASTING ROOM AND BOTTLE SHOP, THE SKYPAC DONATED BY KEN & DEB STEIN, 440 MAIN / MICKI'S ON MAIN, GARY REIMER, KAREN CRABTREE, LEE BUILDING PRODUCTS, THE PAINT'N PLACE, BELLA SALON & SPA, SHANNA PAUL, AND DORIS LOVE HUNT.

ALSO A HUGE THANKS TO BELINDA AND DIGBY PALMER FOR PROCURING THE CRAWFISH FROM MS, BROOK TALLEY, AND THE LWW MISSION TEAM MEMBERS FOR HELPING OUT!

Be a Ripple in the Pond

Donate today to help the Living Waters for the World 2018 Mission Team deliver clean water to Peru

\$500

Pay for hardware and tools

\$1000

Sponsor a team member's in-country expenses

\$1295

Sponsor a team member to be trained at Clean Water U, the LWW training center in Oxford, MS

\$3000

Pay for an initial site visit

\$4,500.00

Sponsor a team member. Amount includes airfare, training, food, lodging, transportation, and immunizations

\$3000

Pay for the team to have a translator

Donate your frequent flyer miles

Donate by:

- Making a check payable to CEC with LWW in the memo
- Give online at www.cecwg.com
- Adding change to the water bottle

The Parish Register

BIRTHS

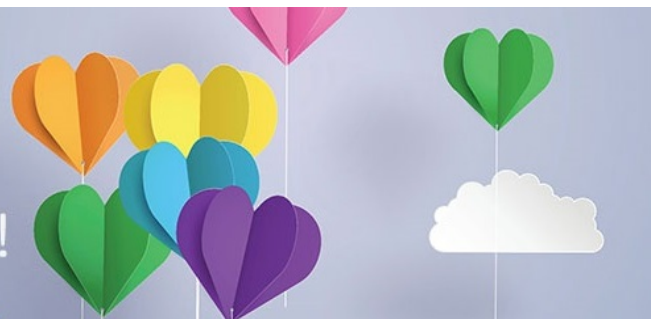
Richard Hooper “Richy” Dort was born on May 30th to parents Richard and Abigayle Dort. Richy was born weighing 6lbs, 14oz and 20.5 inches.



June Birthdays

06/01	Marlene Cherry	06/11	Andrew Joyce	06/22	Bruce Powell
06/01	Luke Keith	06/13	Tara Pattee	06/22	Ada Skillern
06/01	Ken Smart	06/13	Helen Siewers	06/23	Donna Bussey
06/03	Pitt Derryberry	06/13	Craig Taylor	06/23	Aidan McAllister
06/03	Guen Petty	06/14	Bethaney Adams	6/24	Jessica Adams
06/04	Barbara Ford	06/14	Virginia Neill Caudill	6/24	Debbie Shoulders
06/04	Brody Hale	06/14	Joyce Hart	06/25	Mitzi Dooley
06/04	Merritt Hale	06/15	Russell Jefferson II	06/25	Pete Dotson III
06/05	Sara Stevens	06/16	Kevin Brooks	06/25	Nat Love III
06/07	Melinda Riedel	06/16	Belva Tucker	06/25	Casey Travelsted
06/07	Chris Siegert II	06/16	Elaine Vilines	06/26	Richard Geraghty
06/08	Ronan McBaen	06/17	David Cole	06/27	Susan Gaines
06/08	Tere-sea White	06/17	Sharon Dyrsen	06/27	Georgie Anne Jagers
06/09	Gretchen Niva	06/17	Barbara Keith	06/27	Digby Palmer Jr.
06/09	Troy Puckett Sr	06/17	Deb Stein	06/28	Thomas Everett
06/10	Clinton Pillow	06/17	Ryder Travelsted	06/28	Rick Shannon
06/10	Fred Siewers	06/19	Miles Buchanon	06/28	Carly Shoulders
06/11	Charles Bussey	06/21	Alice Simpson	06/29	Chris Hunnewell
06/11	Sheila Griffin	06/22	Mason Brown	06/29	Brooks Mills

HAVE THE **HAPPIEST**
OF **HAPPY** BIRTHDAYS!



The Parish Online

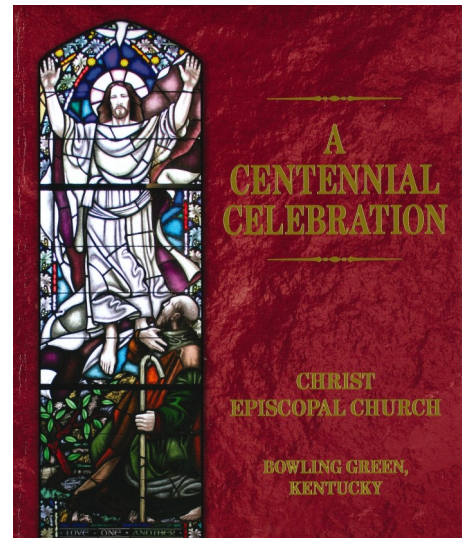
Be sure to check the parish's website at www.cecbg.com for any communication you might have missed. *The Lancet* Friday electronic newsletter and *The Window* monthly newsletter are found under the Communications tab. You can also check the church calendar along with the Ministry Scheduler under the Calendar tab.

Always remember to check Christ Church's Facebook page for up to date information and event pictures. You can like us at www.facebook.com/cecbg



Cookbooks For Sale

The Christ Church Guild has been working toward the completion of a new cookbook. It is now finished and "A Centennial Cookbook" is now available to the parish and friends of Christ Church. Over two hundred cookbooks have been ordered and are priced at \$20 to support the outreach efforts of the Guild. If you would like to purchase one, please stop by the Church Office.



Prints For Sale



John David Thompson, local artist, was commissioned by Christ Church to paint the Christ the Good Shepherd stained glass window that is centered above the altar. Twenty-five numbered prints have been produced from the original painting and are priced at \$100 to support the Friends of Music Fund at Christ Episcopal Church. If you would like to purchase one, please stop by the Church Office and speak to Ken. The original painting will be framed and hung in the Church Office.

Diocese Of Kentucky

Remember to check out the Diocese of Kentucky website for all things related to the Diocese. You can find news and events along with ministries the Diocese is partnered. Go to www.episcopalky.org

Christ Episcopal Church
Operating Fund Report for period ending April 30, 2018

Account #	Account Name	APR 2018	YTD 2018	Annual Budget	% of Annual Budget
INCOME					
4.10.110	Pledged Offering	42,500.33	257,724.60	601,863.00	43%
4.10.120	Prior Year Pledged Offering	0.00	285.00	0.00	0%
4.10.130	Loose Offering	1,544.76	2,477.01	5,000.00	50%
4.10.132	Non-pledged Offering	2,900.00	13,160.00	49,700.00	26%
Parish Offerings TOTAL		46,945.09	273,646.61	656,563.00	42%
4.10.200	Diocesan Support - WKU Chaplain	2,250.00	9,000.00	27,000.00	33%
4.10.250	Diocesan Support - WKU Episcopal Campus Ministry (ECM)	0.00	2,625.00	10,500.00	25%
Diocesan Support TOTAL		2,250.00	11,625.00	37,500.00	31%
4.10.300	2018 Porter Sims Trust	0.00	0.00	74,860.00	0%
4.10.360	Covington Memorial Endowment	0.00	0.00	4,274.00	0%
Investment Income TOTAL		0.00	0.00	79,134.00	0%
4.10.920	Facilities Use	280.00	330.00	4,500.00	7%
4.40.997	Credit Card Fraud Reimbursement	0.00	55.04	0.00	0%
Miscellaneous Income TOTAL		280.00	385.04	4,500.00	9%
INCOME TOTAL		49,475.09	285,656.65	777,697.00	37%
EXPENSE					
5.16.100	Office	1,232.77	6,494.65	28,000.00	23%
5.16.110	Bank Charges	203.50	1,187.11	4,000.00	30%
5.16.150	Telephone	178.45	713.60	3,700.00	19%
5.16.180	Communications	273.90	699.23	10,000.00	7%
Administration TOTAL		1,888.62	9,094.59	45,700.00	20%
5.16.200	Janitorial Services & Supplies	2,524.30	14,255.08	48,000.00	30%
5.16.210	Utilities	3,531.12	14,167.42	43,000.00	33%
5.16.240	Repairs	1,375.00	4,045.67	17,000.00	24%
5.16.250	Grounds Maintenance	260.00	1,277.50	4,500.00	28%
5.16.260	Insurance	0.00	3,822.50	16,000.00	24%
Buildings and Property TOTAL		7,690.42	37,568.17	128,500.00	29%
5.13.100	Children's Christian Education	582.44	1,484.91	9,500.00	16%
5.13.102	Youth Christian Education	11.97	190.97	750.00	25%
5.13.120	Adult Christian Education	73.50	397.05	2,000.00	20%
5.13.200	Episcopal Youth Community (EYC)	269.94	2,568.59	6,000.00	43%
Christian Formation TOTAL		937.85	4,641.52	18,250.00	25%
5.13.300	WKU Episcopal Campus Ministry (ECM)	588.58	1,050.67	6,624.00	16%
5.13.311	WKU ECM Peer Minister Salaries	200.00	1,400.00	3,600.00	39%
5.13.312	WKU ECM Peer Minister FICA	15.30	107.10	276.00	39%
WKU Episcopal Campus Ministry (ECM) TOTAL		803.88	2,557.77	10,500.00	24%
5.18.100	Diocesan Assessment	7,630.00	30,520.00	91,560.00	33%
5.18.200	Theological Education	1,000.00	1,000.00	2,000.00	50%
5.18.279	All Saints' Scholarship Income	0.00	(25.00)	0.00	0%
5.18.280	All Saints' Scholarships	0.00	76.00	2,000.00	0%
5.18.350	Diocesan Convention Deputies	0.00	88.00	2,000.00	4%
5.18.351	Vestry Development/Training/Retreat	0.00	104.84	1,200.00	9%

Christ Episcopal Church
Operating Fund Report for period ending April 30, 2018

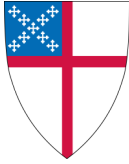
Account #	Account Name	APR 2018	YTD 2018	Annual Budget	% of Annual Budget
Diocesan and Vestry Support TOTAL		8,630.00	31,763.84	98,760.00	32%
5.12.200	Music Supplies	199.49	223.32	1,500.00	15%
5.12.201	Choir Music	139.00	219.48	1,500.00	15%
5.12.202	Organ Maintenance	0.00	0.00	1,450.00	0%
5.12.203	Piano Maintenance	0.00	240.00	450.00	53%
5.12.204	Instrumentalists	0.00	2,670.00	5,000.00	53%
5.12.205	Supply Organist	0.00	0.00	800.00	0%
5.12.210	Choir Section Leaders and FICA	861.22	3,148.79	10,500.00	30%
5.12.219	Friends of Music Income	(400.00)	(2,161.32)	(2,000.00)	108%
5.12.221	Madrigal Dinner and Concert	0.00	(117.34)	1,300.00	-9%
Music Ministry TOTAL		799.71	4,222.93	20,500.00	21%
5.14.100	Parish Life	344.69	1,919.71	6,500.00	30%
5.14.124	Becca's Ordination to the Priesthood and Reception	223.86	3,249.18	5,000.00	65%
5.14.200	Stewardship	0.00	0.00	2,000.00	0%
5.14.400	Congregational Development	975.00	1,529.36	4,500.00	34%
5.14.420	Congregational Vitality	15.00	15.00	0.00	0%
5.14.430	Pastoral Care Ministry	0.00	0.00	500.00	0%
5.14.440	Hospitality Ministry	0.00	650.00	3,500.00	19%
5.14.660	Daughters of the King (DOK)	0.00	25.00	200.00	13%
5.14.661	Deaf and Hard of Hearing Ministry	0.00	0.00	693.00	0%
Parish Life TOTAL		1,558.55	7,388.25	22,893.00	32%
5.12.000	Worship	189.55	827.88	3,500.00	24%
5.12.149	Easter and Christmas Flowers Income	(300.00)	(1,222.50)	0.00	0%
5.12.150	Easter and Christmas Flowers	1,143.02	1,143.02	500.00	229%
Worship TOTAL		1,032.57	748.40	4,000.00	19%
PROGRAM TOTAL		23,341.60	97,985.47	349,103.00	28%
5.11.110	Rector Salary	4,564.75	18,259.00	54,777.00	33%
5.11.120	Rector SECA	585.25	2,341.00	7,023.00	33%
5.11.130	Rector Housing	2,500.00	10,000.00	30,000.00	33%
5.11.140	Rector Medical/Dental/HSA	2,805.00	8,920.00	26,760.00	33%
5.11.150	Rector Pension	1,377.00	5,508.00	16,524.00	33%
5.11.160	Rector Life Insurance	34.00	136.00	408.00	33%
5.11.192	Rector Continuing Education	0.00	1,012.98	4,000.00	25%
5.11.193	Rector Travel	0.00	0.00	1,500.00	0%
5.11.194	Rector Telephone	102.99	528.82	1,400.00	38%
5.11.195	Rector Hospitality	8.21	88.40	1,000.00	9%
Rector TOTAL		11,977.20	46,794.20	143,392.00	33%
5.11.210	Associate Rector Salary	2,634.75	10,539.00	31,617.00	33%
5.11.220	Associate Rector SECA	349.42	1,397.68	4,193.00	33%
5.11.230	Associate Rector Housing	1,583.34	6,333.36	19,000.00	33%
5.11.240	Associate Rector Medical/Dental/HSA	1,166.00	3,514.00	10,542.00	33%
5.11.250	Associate Rector Pension	822.15	3,288.60	9,866.00	33%
5.11.260	Associate Rector Life Insurance	34.00	136.00	408.00	33%
5.11.271	Associate Rector Continuing Education	701.23	1,001.99	1,500.00	67%
5.11.272	Associate Rector Travel	0.00	0.00	1,000.00	0%
5.11.273	Associate Rector Telephone	70.58	282.28	1,400.00	20%
5.11.274	Associate Rector Hospitality	0.00	0.00	1,000.00	0%
Associate Rector TOTAL		7,361.47	26,492.91	80,526.00	33%

Christ Episcopal Church
Operating Fund Report for period ending April 30, 2018

Account #	Account Name	APR 2018	YTD 2018	Annual Budget	% of Annual Budget
5.11.400	Director of Music/Organist Salary	2,938.42	11,636.14	35,261.00	33%
5.11.402	Director of Music/Organist Funerals	0.00	250.00	2,000.00	13%
5.11.410	Director of Music/Organist FICA	224.79	918.29	2,850.00	32%
5.11.420	Director of Music/Organist Pension	264.47	815.91	3,354.00	24%
5.11.430	Director of Music/Organist Continuing Education	0.00	0.00	1,500.00	0%
Director of Music/Organist TOTAL		3,427.68	13,620.34	44,965.00	30%
5.11.500	Director of Christian Education Salary	2,789.17	11,045.11	33,470.00	33%
5.11.510	Director of Christian Education FICA	213.37	853.48	2,560.00	33%
5.11.520	Director of Christian Education Pension	251.03	753.09	3,012.00	25%
5.11.530	Director of Christian Education Continuing Education	0.00	491.04	800.00	61%
Director of Christian Education TOTAL		3,253.57	13,142.72	39,842.00	33%
5.11.310	Director of Youth Salary	2,019.94	7,691.31	23,307.00	33%
5.11.315	Director of Youth FICA	148.58	594.32	1,783.00	33%
5.11.350	Director of Youth Pension	349.62	524.43	2,098.00	25%
5.11.370	Director of Youth and Online Communications Continuing Education	(188.90)	870.52	800.00	109%
5.11.380	Director of Online Communications Salary	832.00	3,168.00	9,600.00	33%
5.11.381	Director of Online Communications FICA	61.20	244.80	734.00	33%
5.11.382	Director of Online Communications Pension	144.00	216.00	864.00	25%
Director of Youth and Online Communications TOTAL		3,366.44	13,309.38	39,186.00	34%
5.11.670	Parish Administrator Salary	4,885.67	19,347.25	58,628.00	33%
5.11.672	Parish Administrator FICA	373.75	1,495.00	4,485.00	33%
5.11.676	Parish Administrator Pension	439.72	1,319.16	5,277.00	25%
5.11.678	Parish Administrator Disability and Life Insurance	0.00	130.89	562.00	23%
5.11.679	Parish Administrator Continuing Education	0.00	0.00	800.00	0%
Parish Administrator TOTAL		5,699.14	22,292.30	69,752.00	32%
5.11.750	Supply Clergy	0.00	0.00	500.00	0%
5.11.800	Nursery Staff	260.00	1,555.00	6,000.00	26%
5.11.801	Nursery Staff FICA	19.89	118.99	459.00	26%
5.11.900	Staff Appreciation Christmas Gifts	0.00	0.00	750.00	0%
5.17.100	Travel Reimbursement	0.00	0.00	250.00	0%
5.17.210	Deacon Continuing Education	0.00	0.00	800.00	0%
5.17.275	Staff Development	0.00	96.78	750.00	13%
5.17.350	Books, Periodicals, Dues, Subscriptions	253.32	414.83	1,000.00	41%
Other Staff Salaries and Benefits TOTAL		533.21	2,185.60	10,509.00	21%
STAFF SALARIES AND BENEFITS TOTAL		35,618.71	137,837.45	428,172.00	32%
EXPENSE TOTAL		58,960.31	235,822.92	777,275.00	30%
Net Surplus (Difference)		(9,485.22)	49,833.73	422.00	

Christ Episcopal Church
Outreach Funds Report for period ending April 30, 2018

Fund Name	2018				Balance - 04/30/2018	2017 Income	2016 Income	2015 Income	2014 Income	2013 Income	2012 Income
	Balance - 01/01/2018	Income	Expense	04/30/2018							
All Saints Center	0.00	0.00	0.00	0.00	488.00	0.00	0.00	0.00	0.00	0.00	0.00
All Saints Scholarship	3,043.29	413.23	0.00	3,456.52	2,594.43	3,919.00	2,835.31	0.00	0.00	0.00	0.00
Bishop's Discretionary	0.00	1,177.00	0.00	1,177.00	959.00	0.00	0.00	0.00	0.00	0.00	0.00
Churches United in Christ Help Ministry	1,113.05	3,050.00	3,200.00	963.05	9,640.00	10,519.00	13,862.00	10,904.00	11,084.00	6,610.00	
Diocese of Jerusalem Good Friday Offering	0.00	60.00	0.00	60.00	25.00	0.00	0.00	0.00	0.00	0.00	0.00
Episcopal Campus Ministry (ECM)	150.00	0.00	0.00	150.00	150.00	0.00	0.00	0.00	0.00	0.00	0.00
Episcopal Relief & Development - Hurricanes	0.00	0.00	0.00	0.00	3,556.00	0.00	0.00	0.00	0.00	0.00	0.00
Episcopal Youth Community (EYC)	237.19	1,035.00	0.00	1,272.19	1,316.00	959.00	873.00	0.00	0.00	0.00	0.00
Heifer Project	0.00	0.00	0.00	0.00	0.00	670.00	699.74	865.26	0.00	0.00	0.00
Hotel Inc	650.00	1,110.00	1,050.00	710.00	3,516.00	2,960.00	510.00	1,654.00	5,115.00	4,730.00	
Living Waters for the World	14,175.42	14,129.00	9,750.53	18,553.89	19,888.11	3,428.00	0.00	0.00	0.00	0.00	0.00
Meats, Inc	0.00	0.00	0.00	0.00	573.00	250.00	325.00	0.00	0.00	0.00	0.00
Room In The Inn	634.20	445.00	429.20	650.00	839.00	115.00	250.00	75.00	0.00	0.00	0.00
United Thank Offering - Ascension Sunday	0.00	0.00	0.00	0.00	50.00	0.00	0.00	0.00	0.00	0.00	0.00
Wednesday Community Lunch Ministry	3,664.26	726.00	1,595.42	2,794.84	4,330.00	2,811.00	5,220.00	8,419.00	7,198.00	0.00	
Wednesday Community Lunch Ministry	1230 served YTD; 22 volunteers average/week										
Yoga	1,094.05	259.00	0.00	1,353.05	1,362.40	1,062.00	498.00	0.00	0.00	0.00	0.00
TOTAL	24,761.46	22,404.23	16,025.15	31,140.54	49,286.94	26,693.00	25,073.05	21,917.26	23,397.00	11,340.00	
Rector Discretionary		1,205.60			7,928.10						
Associate Rector Discretionary		2,863.10			1,660.95						
Deacon Discretionary		477.80			2,353.37						
TOTAL		4,546.50			11,942.42						
TOTAL OUTREACH INCOME		26,950.73			61,229.36						



Christ Episcopal Church
 1215 State Street
 Bowling Green, Kentucky 42101
 270.843.6563
www.cecbg.com

Office Hours

Monday—Thursday
 8:30am—4:30pm
 Closed Fridays

Service Times

Sunday

8:00am Holy Eucharist Rite One
9:00am Sunday School
10:00am Holy Eucharist Rite Two

Tuesday

12:15pm Center ing Prayer Community

Wednesday

7:00am Morning Prayer
12:00pm Holy Eucharist with Healing Prayers

Clergy And Staff

The Reverend Dr. Steven J. Pankey
Rector
steve@cecbg.com

The Reverend Rebecca Kello
Associate Rector and Chaplain to the Episcopal Campus Ministry at WKU
becca@cecbg.com

The Reverend Kellie Mysinger
Deacon
kellie@cecbg.com

C. Kenneth Stein
Director of Music and Organist
ken@cecbg.com

Laura Goodwin
Director of Christian Education
laura@cecbg.com

Karen Crabtree
Director of Youth and Director of Online Communications
karen@cecbg.com

The Window

Christ Episcopal Church
 1215 State Street
 Bowling Green, KY 42101

First Class Postage

RETURN SERVICE REQUESTED

The Vestry

2018 Class

Pitt Derryberry
 Hamp Moore
 John Parker
 Ann Puckett

2019 Class

Shelley Carter
 Scott Harris
 Laura Harper Lee
 Paula Lyons

2020 Class

Gail Brooks
 Justin Chaffin
 Kathy Leonard
 Gary Reimer

Officers

Ann Puckett, *Senior Warden*
 John Parker, *Junior Warden*
 Paula Lyons, *Clerk*
 Leslie Weigel, *Treasurer*
 Hamp Moore, *Assistant Treasurer*
 Mark Eastin, *Assistant Treasurer*

Seven Parish Ministry Areas And Vestry Member Liaisons

Worship

Steve Pankey and Becca Kello

Learn —Christian Formation

Pitt Derryberry and Kathy Leonard

Grow —Congregational Development

Scott Harris and Paula Lyons

Radiate —Fellowship

Gail Brooks and Shelley Carter

Radiate —Outreach

Justin Chaffin and Gary Reimer

Radiate —Pastor I Care

Laura Harper Lee and Hamp Moore

Administration

Ann Puckett and John Parker

**Christ Episcopal Church is a community of Christ's servants who seek to —
 Worship God with joy and wonder, Learn and Grow together, and Radiate God's love to all.**

Mission Statement adopted by the Vestry — August 22, 2017